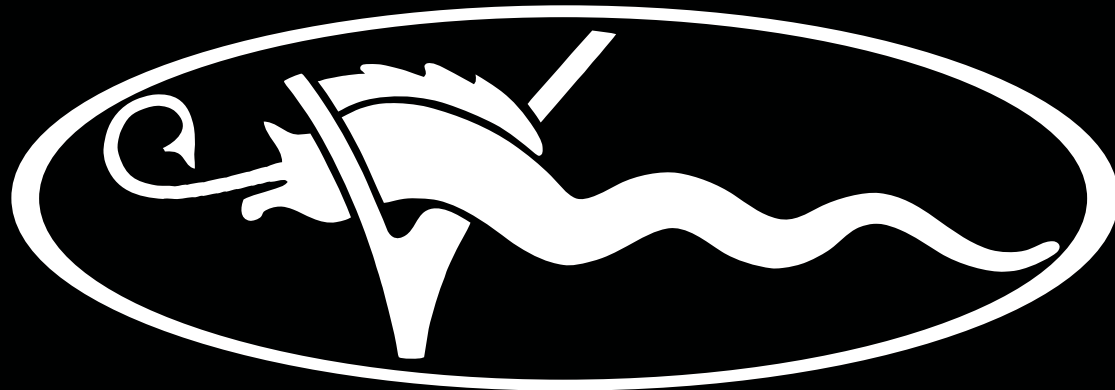


---

# VIKING 50 BILLFISH

---



50|BF

 **viking**  
*yachts*

# VIKING 50 BILLFISH: FEATURE-RICH AND READY TO FISH

---

**The newest Billfish does it all – delivering convertible-level comfort, maximum versatility and Viking engineering, performance and build quality.**

Our largest Billfish yet, the 50 BF builds on the success of the 37, 38 and 46. With its increased size, this model offers high fishing functionality and convertible-level comfort in an innovative, versatile package – with all the industry-leading engineering, performance and quality you expect from Viking.

Since launching the Billfish series in 2017, Viking has delivered a combined 90 boats across the three models, establishing a unique market segment for owners seeking sporty, easily maintained yachts ideal for fish-focused owner/operators. The 50 Billfish takes it a step further by incorporating enhancements that prioritize comfort and luxury while remaining true to the series' sportfishing legacy.

The Billfish shares the same hull as the other three models in the 50 Series, which includes the Convertible, Sport Coupe/Sport Tower and Open Express. Beyond the hull, however, the 50 BF is completely distinct, featuring different mechanical layouts, engine placement, fuel tank configuration and weight distribution.

One of its most defining traits is the significantly large cockpit – measuring 170 square feet – for a mid-size sportfisher. The cockpit accommodates cavernous fish boxes, a generous tackle cabinet, a drink box, and freezer and refrigerated storage. “We’re approaching the fore-and-aft lengths of the 58 and 64 – that gives you an idea of just how big the cockpit is,” says Viking Design Manager David Wilson. “The mezzanine has great depth, too, which also allows for a port-side lounge.”

The 50 BF is designed with a fixed aft bulkhead integral to the deckhouse. A centerline door leads to the day boat-style salon, which includes a port-side lounge, a starboard-side raised dinette

with rod storage below and a split galley forward. Owners have the flexibility to install up to three Sub-Zero refrigerator/freezer units, with ample cabinet storage and countertop space.

The boat features a two-stateroom layout with an open area that can be configured with upper/lower bunks or outfitted as a rod-and-tackle center. Both staterooms offer privacy, comfort and luxury. The forward master includes a walkaround queen bed with an ensuite head, while the port guest stateroom features upper and lower berths and access to the port head, which also serves as the day head.

Like its stablemates, this Billfish is designed with an inset-style bridge, giving it a sporty silhouette while maintaining a spacious feel on the flybridge. At its core is the center-console walkaround helm – a tournament-proven setup that maximizes visibility. The flybridge also offers seating, a refrigerated drink box and abundant storage.

Powered by 1200 MHP MAN engines, the 50 BF is an offshore powerhouse with exceptional speed, nimble maneuverability and commanding performance. Hull No. 1 is scheduled to debut at our VIP Boat Show, January 30–31, 2026. As with all Vikings, our subsidiary Atlantic Marine Electronics will outfit the boat with the industry's finest electronics, communication, fishfinding and entertainment systems. Also a Viking company, Palm Beach Towers stands ready to install a custom tuna tower.

## **BOTTOM LINE**

The 50 Billfish boasts unmatched value, combining tournament-ready performance, luxury and comfort in a bold, versatile design.

**“ The 50 Billfish is truly incredible. It combines unmatched fishing with exceptional comfort. Whether you’re marlin fishing or relaxing with the family on vacation, it will exceed every expectation. It’s in a class by itself when it comes to versatility and value. ”**

**– Pat Healey**  
*Viking President and CEO*



# 38 BILLFISH





# 46 BILLFISH



PRELIMINARY



# 50 BILLFISH



PRELIMINARY



**50 BILLFISH**



# 50 BILLFISH



PRELIMINARY



PRELIMINARY

# 50 BILLFISH



Open Bridge



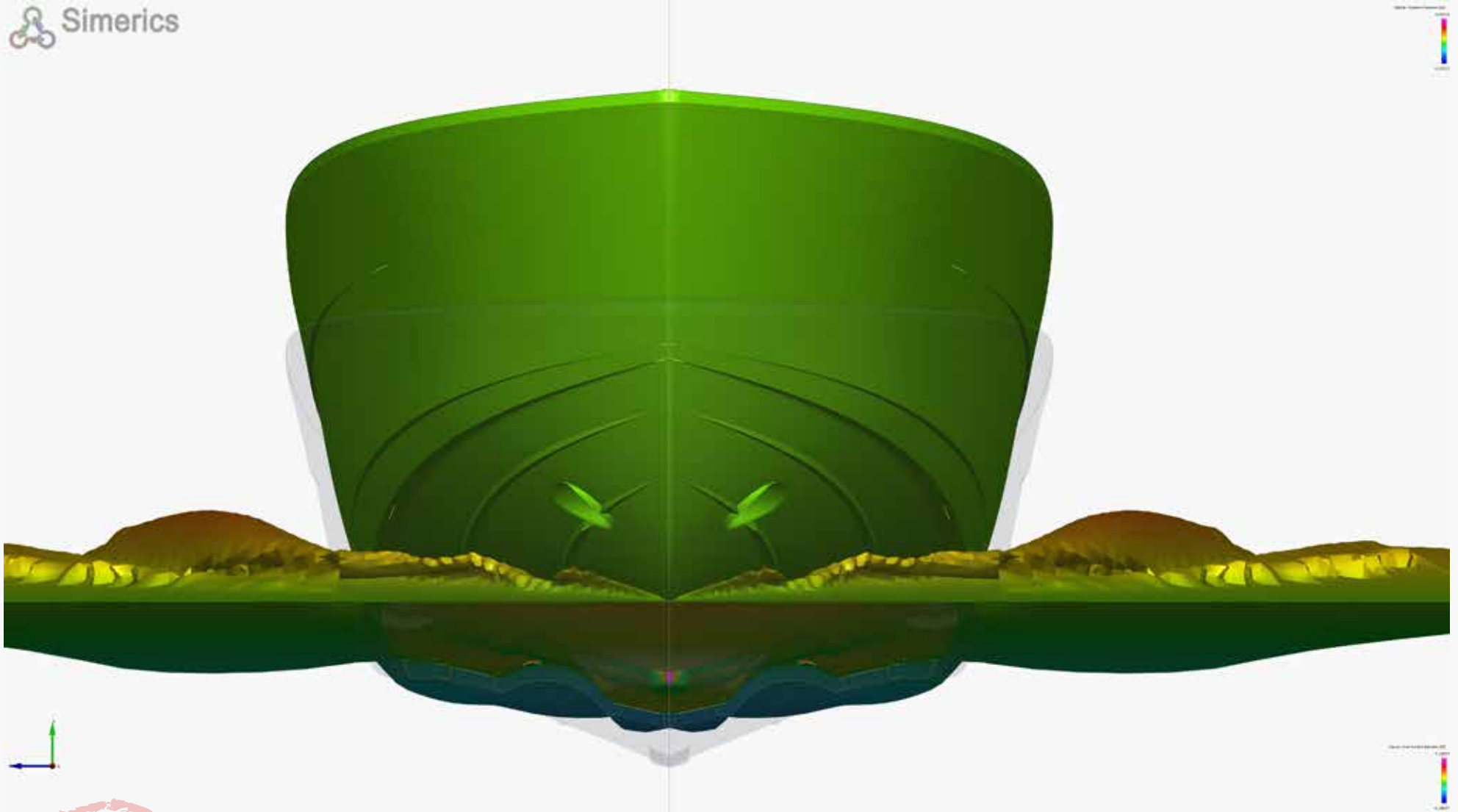


Salon

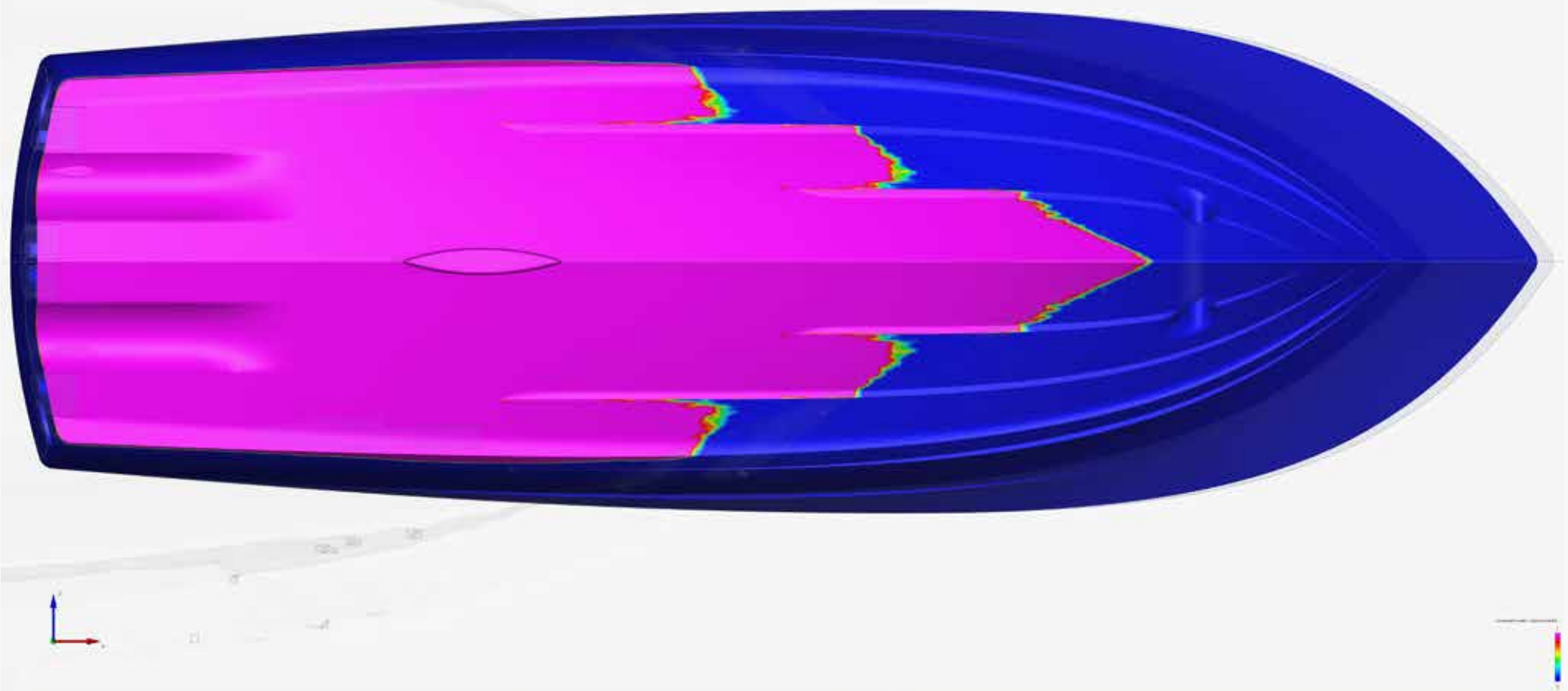


Standard Queen Layout



 Simerics

PRELIMINARY



Computational Fluid Dynamics enables our Design and Engineering team to optimize the running surface for maximum performance. Opposite page: A forward view of the 50's strakes and chines illustrates how they knock down the water to reduce spray for a dry ride. Above: A view of the bottom also shows the strakes and chines in action, with the blue area indicating the hull's separation from the water.















# SPECIFICATION HIGHLIGHTS

<b>Length Overall</b>	<b>51' 8"</b>	<b>15.75 m</b>
<b>Length</b> w/ Bow Pulpit	<b>55' 10"</b>	<b>17.02 m</b>
<b>Length Waterline</b>	<b>44' 8"</b>	<b>13.61 m</b>
<b>Beam Overall</b>	<b>17' 1"</b>	<b>5.21 m</b>
<b>Beam Waterline</b>	<b>14' 3"</b>	<b>4.34 m</b>
<b>Deadrise</b> at Transom	<b>11.7 deg</b>	
<b>Draft</b>	<b>4' 10"</b>	<b>1.47 m</b>
<b>Freeboard</b> Forward	<b>6' 6"</b>	<b>1.98 m</b>
<b>Freeboard Aft</b>	<b>2' 11"</b>	<b>0.89 m</b>
<b>Height Waterline</b> to Top of Flybridge Hardtop	<b>17' 6"</b>	<b>5.33 m</b>
<b>Height Waterline</b> to Top of Flybridge Hardtop Masthead Light	<b>19' 10"</b>	<b>6.05 m</b>
<b>Height Waterline</b> to Top of Flybridge Console	<b>13' 11"</b>	<b>4.24 m</b>
<b>Displacement</b> Standard Fuel Load	<b>64,306 lb.</b> <b>29,169 kg</b>	
<b>Fuel Capacity</b> Standard	<b>1,055 gal.</b> <b>3,994 l</b>	
<b>Fuel Capacity</b> Optional	<b>1,200 gal.</b> <b>4,542 l</b>	
<b>Water Capacity</b>	<b>180 gal.</b>	<b>681 l</b>
<b>Holding Tank Capacity</b>	<b>52 gal.</b>	<b>197 l</b>
<b>Cockpit Area</b>	<b>170 sq. ft.</b>	<b>15.8 sq. m</b>

“ We have the best boatbuilders in the world, and they take real pride in what they do. When you own a Viking, you’re not just a customer — you’re family. ”

– Pat Healey  
*Viking President and CEO*



For the most up to date information on the new 50 Billfish, scan this QR Code.



## DISCOVER THE VIKING DIFFERENCE – EXPERIENCE AND PRIDE.

The Viking Yacht Company is located on New Jersey's Bass River, a winding marsh-lined tributary, which feeds into the Mullica River and flows into the Great Bay. About 50 minutes by boat to Atlantic City, the wilderness of the Bass River is a stark contrast to the leading-edge technology that precedes every Viking leaving New Gretna. Building a better boat every day has been Viking's philosophy for over six decades, and this is why Viking leads the industry today in performance, innovation, engineering and luxury. And Viking will also lead tomorrow because its commitment to excellence is reflected in the "Viking Difference."

**Family Business:** Viking Yachts answers only to its unyielding commitment to build the finest boats money can buy. Brothers Bill and Bob Healey founded the Viking Yacht Company in 1964 and it remains family owned and operated. Bill's son, Patrick Healey, is the President and CEO of the Viking Yacht Company. Robert Healey Jr., who is Bob's son, is Chairman. Pat's children – Sean, Justin and Kaitlyn – represent the third generation and are actively involved in the day-to-day operations of the company.

**State-of-the-Art Facilities:** The Viking plants in New Gretna and Mullica stand out as the pinnacle of boat manufacturing achievement, with modern buildings, state-of-the-art machinery and the space to build over 30 models up to 90 feet. From multiple CNC routers for cutting composite and wood parts to a \$1 million five-axis profiler, which creates foam plugs to build complex molds, Viking clearly defines cutting edge. And yet, with a dedicated, talented and skilled workforce, the human element is equally dynamic. Our key personnel in manufacturing, design and engineering, sales and human resources have been working together for decades.

**Front and Center:** An engineering-driven company, Viking thrives on the pulse of innovation and the

development of new and exciting product. We have the youngest fleet in the marine industry that consists of ground-breaking boats. Our passion for boatbuilding, innovation and presenting fresh new models to our owners led to the development of a Viking brand of outboard-powered boats. The Valhalla Boatworks high-performance luxury outboard-powered boats have grown swiftly since their inception in 2019 and now include multiple models up to 55 feet.

**In-House Manufacturing:** The vast majority of every Viking is designed and manufactured in-house, resulting in the production of the world's finest yachts. Whether it is a fiberglass fuel tank, a wiring harness labeled every eight inches or a hull-to-deck joint through-bolted every three inches, you can be sure of incomparable quality.

**Total Focus:** The Viking demonstrator boat program plays a crucial role in carrying out the company mantra of building a better boat every day. Competition in big-game tournaments around the world helps Viking show our boats, learn from them, improve them, support the Viking customer base, represent the company globally and maintain and grow its leading position in the industry.

**Quality Control:** Viking holds an inherent quality control advantage because the company manufactures most of the yacht's components in-house. In addition, dedicated personnel thoroughly inspect each yacht during the build process. This type of attention to detail ensures greater reliability, safety and customer satisfaction.

**Best in the World:** We often say that we have the best dealer network in the world – and for good reason. Between our domestic and international network, we have 20 dealers spread across dozens of locations throughout the world – and many of them have been part of our family for more than 25 years.

**Finest Service:** Experienced service personnel with an intimate knowledge of onboard systems stand behind every Viking Yacht. You never go to sea alone when you own a Viking. In addition to the Viking Customer Service Department and Viking Yachting Center in New Gretna, we operate the Viking Yacht Service Center and the Viking International Yacht Center on the Intracoastal Waterway in Riviera Beach, Florida. It's just minutes from Palm Beach Inlet; our two service complexes handle warranty, fiberglass, running gear repairs and much more. Staffed by Viking-trained professionals, Viking is the only manufacturer to provide its owners with a satellite facility solely for their convenience.

**Resale:** Top-shelf engineering enables Vikings to deliver value, not only when you are using it, but at resale time as well.

**Vertical Integration:** To complement the Viking experience, we have two sister companies. Palm Beach Towers designs and crafts the finest aluminum tuna towers, custom railings, fiberglass hardtops, dropdown electronic boxes, flush-mounted electric teaser reels and a host of other specialized items. Atlantic Marine Electronics is the premier source for Viking installed navigation, communication and entertainment equipment. By specifying Palm Beach Towers and Atlantic Marine Electronics for your accessories, you are assured one-stop shopping and will enjoy the absolute bliss of taking delivery of your new Viking turnkey ready.

**Lead Not Follow:** In the marine industry, we don't just raise the bar. We are the bar. Viking incorporates the best in design and performance to manufacture the finest semi-custom boats in the world. From technical advancements like virtual tank testing and designer touches such as curved doorways and exquisite joinery, Vikings are the epitome of luxury and seagoing excellence. Come visit our family of boatbuilders and discover the Viking Difference.



Please contact your Viking dealer to arrange a sea trial and a tour of our modern facility on the Bass River near Atlantic City.

**Route 9, On the Bass River • P.O. Box 308 • New Gretna, NJ 08224**  
**Phone: 609.296.6000 • Fax: 609.296.3956 • [vikingyachts.com](http://vikingyachts.com)**

The right is reserved to make changes, without notice, at any time, in equipment, materials, prices and specifications. Accommodation drawings and photos may show optional equipment. Performance may vary depending upon conditions.